



The State of DG and Automation

SUBTITLE GOES HERE

erwin Data Intelligence Suite



Improve data capability, literacy and results, supporting enterprise data governance and business enablement.

Data Intelligence Suite

DATA CATALOGING

erwin Data Catalog Suite

Metadata Manager

Mapping Manager

Reference Data
Manager

Lifecycle Manager

Standard Data Connectors

DATA LITERACY

erwin Data Literacy Suite

Business
User Portal

Business Glossary
Manager

Smart Data Connectors

Combine erwin Data Catalog with erwin Data Literacy to fuel an automated, real-time, high-quality data pipeline.

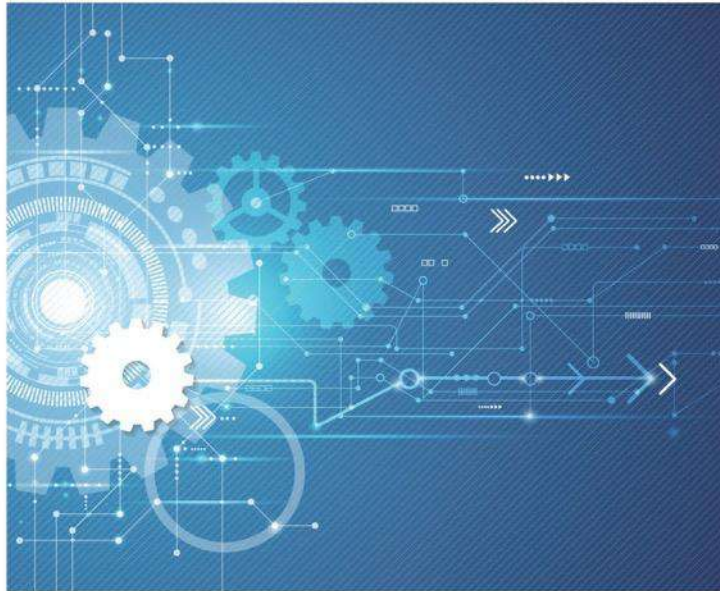
Give all stakeholders access to data relevant to their roles and within a business context.

Power decision-making based on a full inventory of reliable information.

2020 State of Data Governance & Automation Report

The 2020 State of Data Governance and Automation

Many organizations have started their data governance journeys to achieve data intelligence, but they have not automated their data operations to create sustainable and repeatable practices. Without an accurate, high-quality, real-time enterprise data pipeline, it can be difficult to uncover the necessary insights to make optimal business decisions.



erwin
the data governance company

DATAVERSITY

In partnership with



- Surveyed North American organizations
- Respondents in data or data architecture roles, information/data governance professionals, business intelligence/analysts, data scientists and executive management
- Organizations in technology, government, consulting, insurance, finance, healthcare and manufacturing among others
- All sizes but majority 101 to 5,000 employees (40%) then 10,001 to 50,000 (17%)

Key Drivers



In 2018, regulatory compliance was the primary driver. Today, the priorities are:



Better decision-making **(62%)**



Analytics **(51%)**



Regulatory compliance **(48%)**



Digital transformation **(37%)**



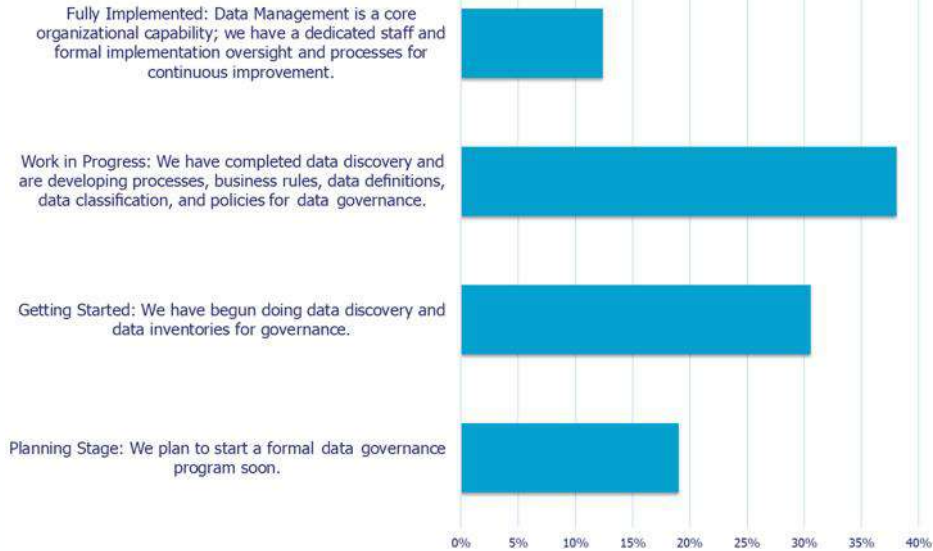
Data standards/uniformity **(36%)**

What are the top three drivers of your data governance/data intelligence initiative? [Please select three choices]



Program Maturity

How mature is your organization's data governance/data intelligence program, or what stage are you in?



- Work in progress (38%)
- Just getting started (31%)
- Planning stage (19%)
- Fully implemented (12%)

These numbers are lower than in 2018.

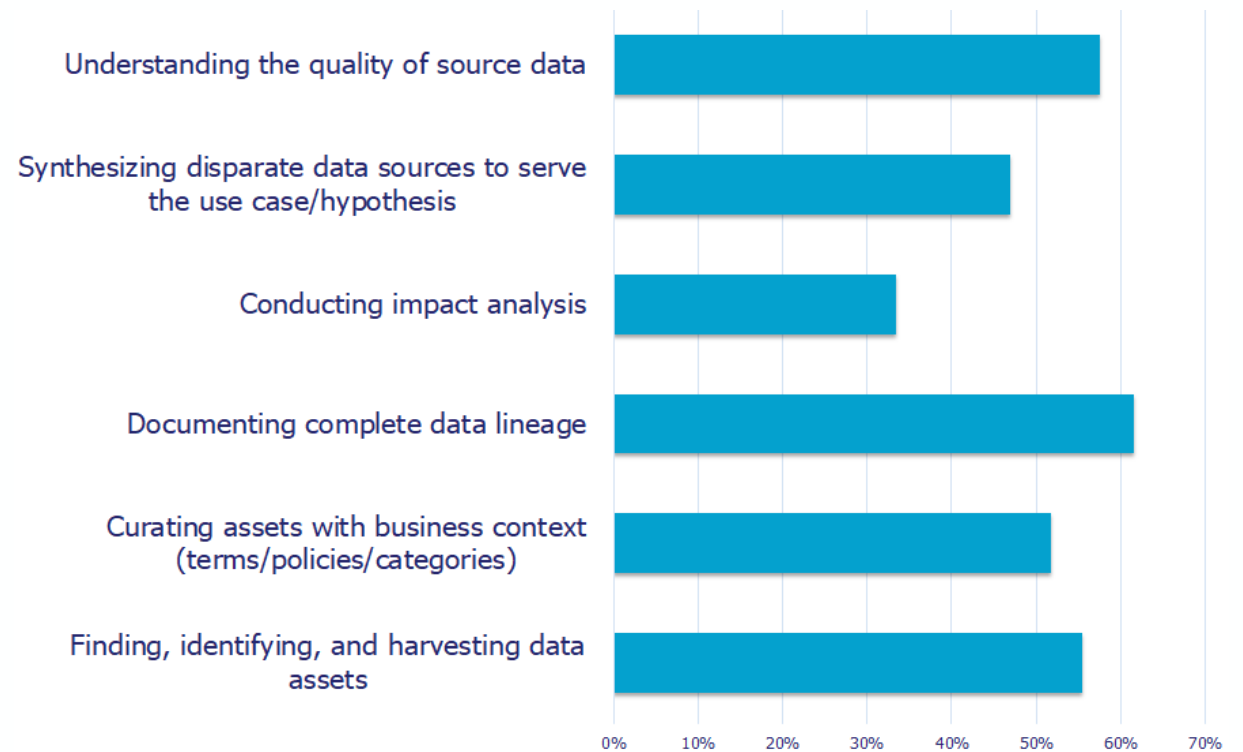
Important steps have been taken, but we suspect finding the right approach is still a challenge.

Plus re-evaluation of what's been done or partially implemented in light of new needs and challenges.

Data Value Chain Bottlenecks

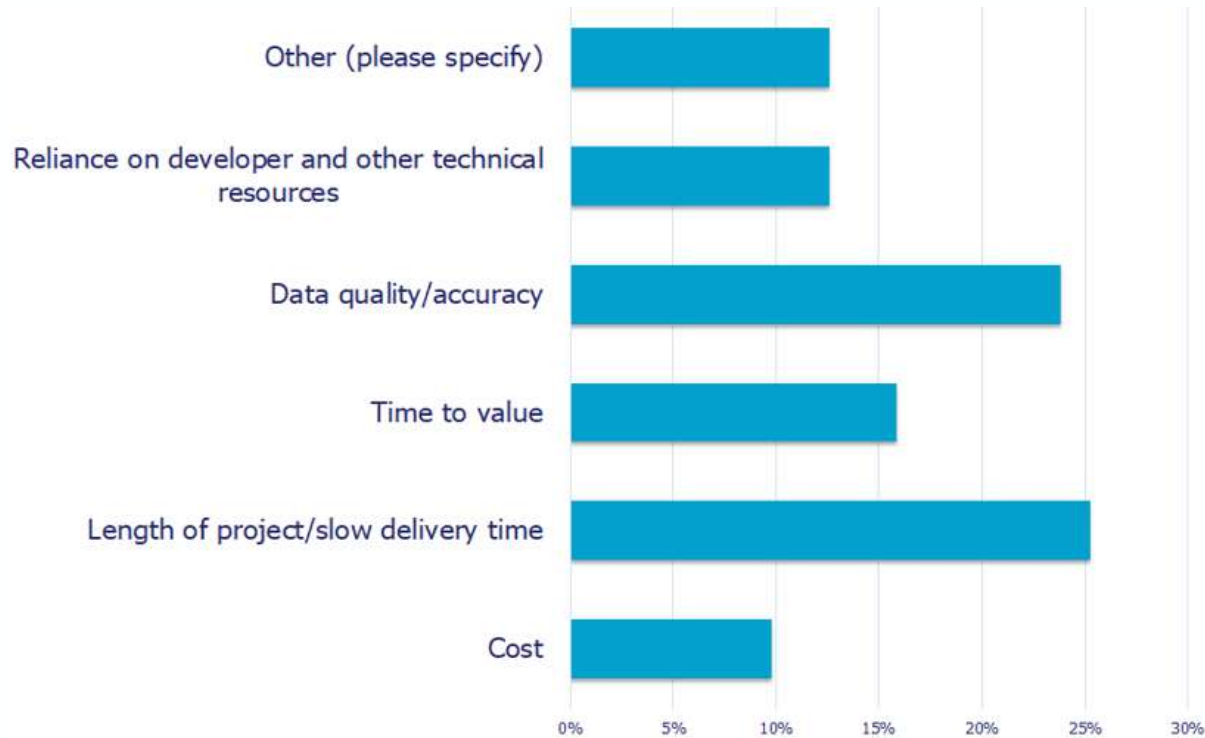
- Documenting complete data lineage (62%)
- Understanding the quality of source data (58%)
- Finding, identifying and harvesting data (55%)
- Curating data assets with business context (52%)

What are the most serious bottlenecks in your organization's data value chain? [Select all that apply]



Data Prep, Governance & Intelligence Challenges

What is the most significant challenge to your organization's data preparation/data governance/data intelligence efforts?



- > Length of project/delivery time (25%)
- > Data quality/accuracy (24%)
- > Time to value (16%)
- > Reliance on developers and other technical resources (13%)

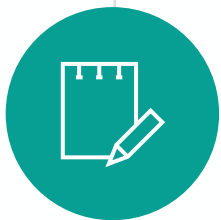
Time Spent on Data Activities (Hours Per Week)



70% of survey respondents spend 10+ hours per week on data-related activities.

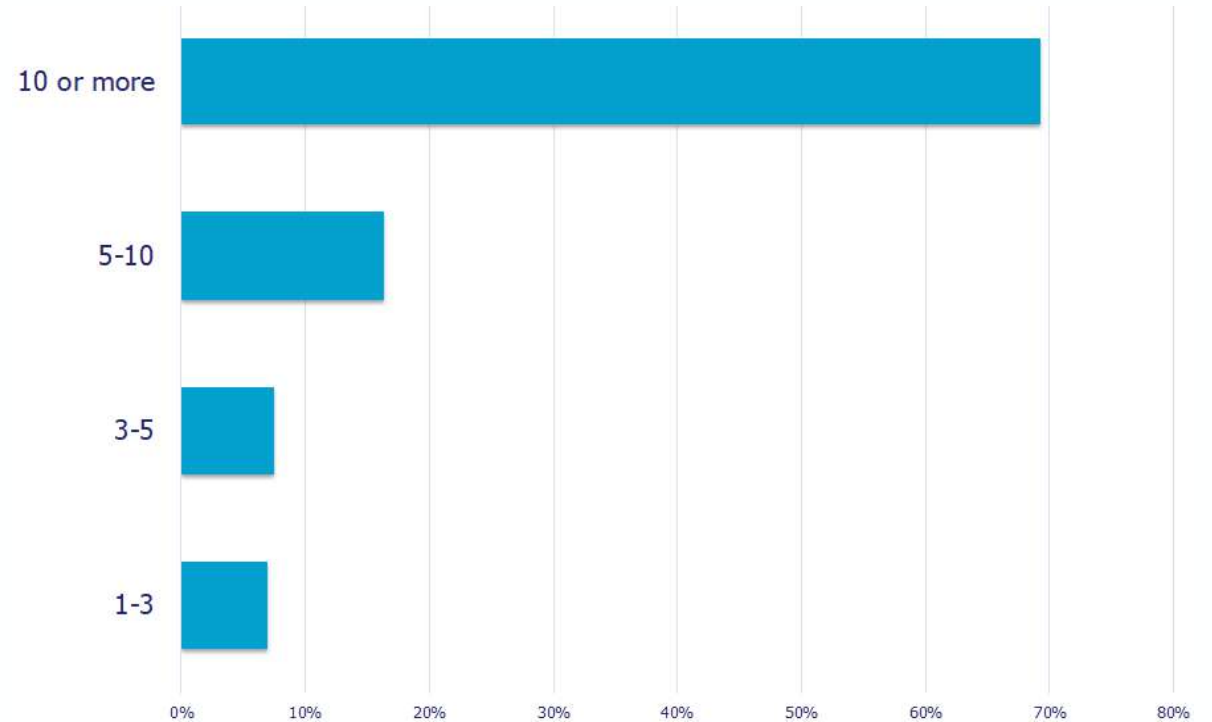


Most of that time is spent on data source analysis (fit for use).



That is, after searching for and preparing data so it can be analyzed.

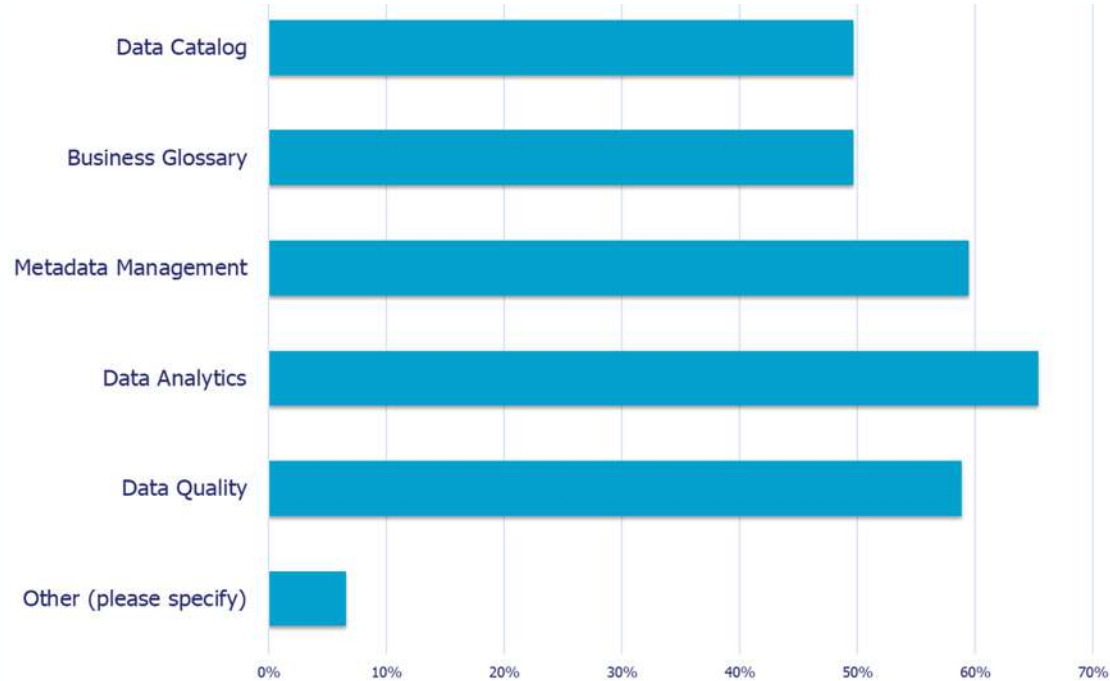
How many hours per week on average do you spend on data-related activities?



Data Prep, Governance & Technology Deployments

Have you deployed any data preparation/data governance/data intelligence solutions?

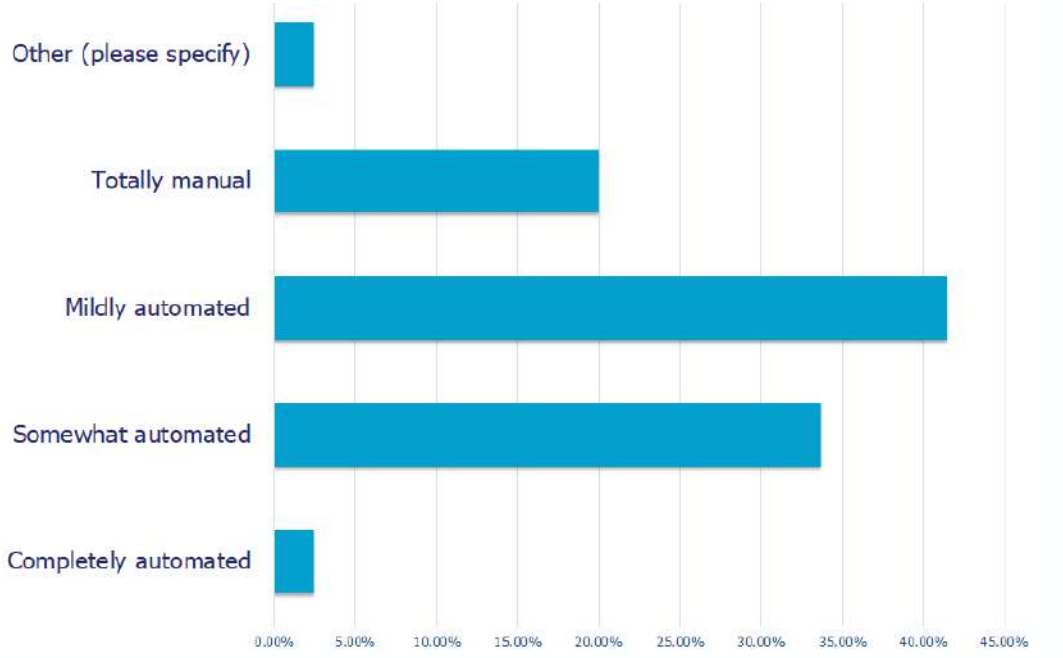
If yes, what type? [Select all that apply]



- > Data Analytics (65%)
- > Metadata Management (59.48%)
- > Data Quality (58.82%)
- > Data Catalog (49%)
- > Business Glossary (49%)

Level of Automation

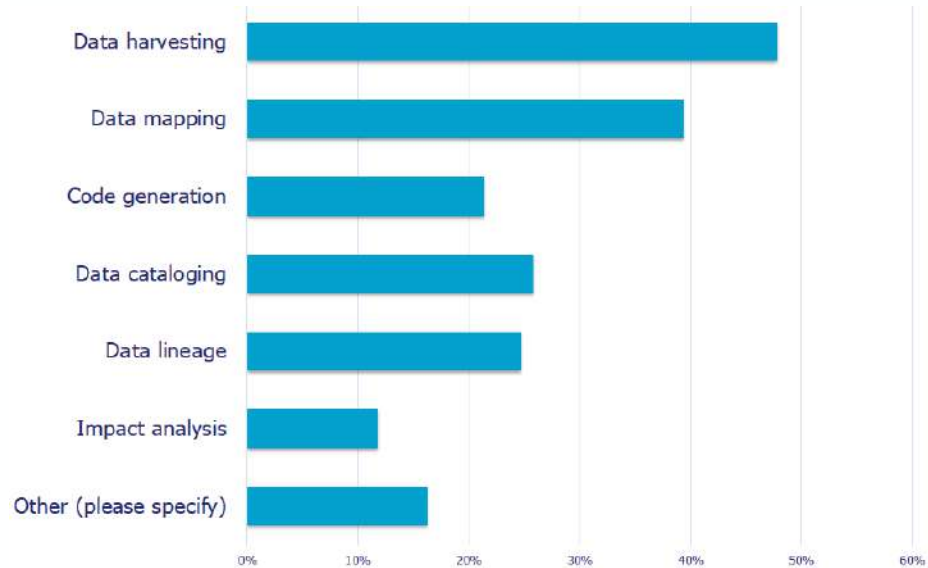
To what level are your data operations automated?



- > Mildly Automated (41%)
- > Somewhat Automated (34%)
- > Totally Manual (20%)
- > Completely Automated (2.5%)

What's Been Automated

What specific data operations have you automated? [Select all that apply]



Data Harvesting (48%)



Data Lineage (25%)



Data Mapping (39%)



Code Generation (21%)



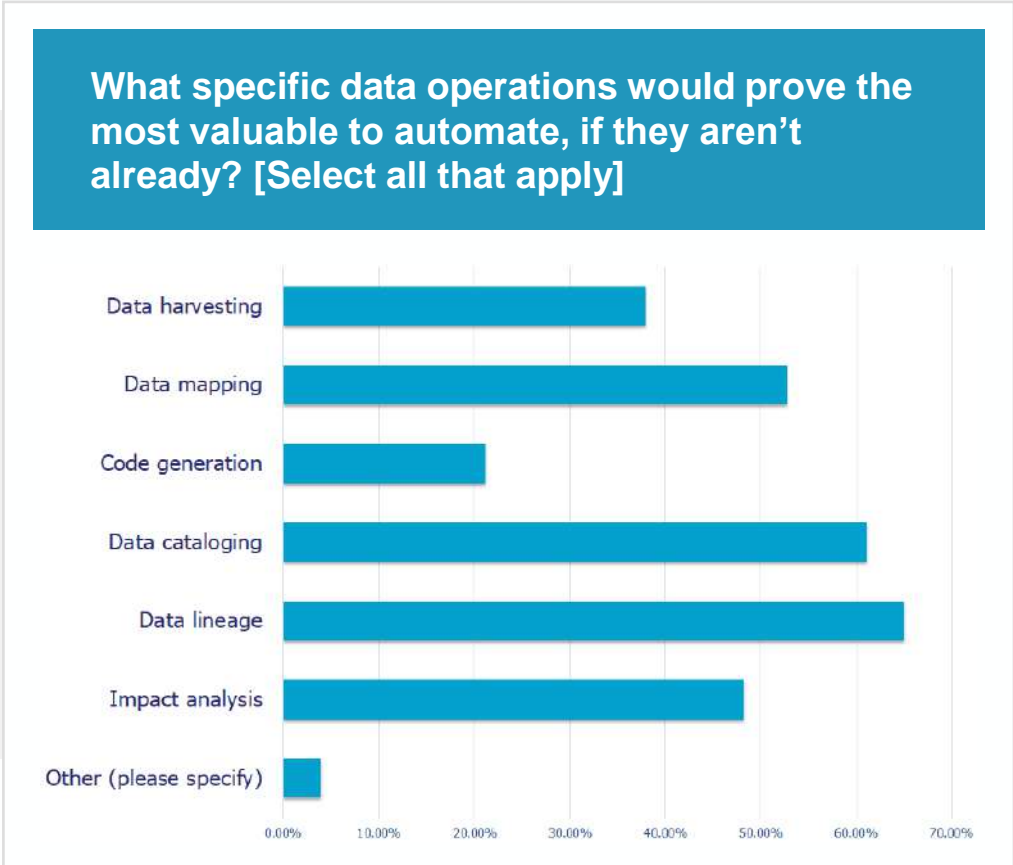
Data Cataloging (26%)



Impact Analysis (12%)

Desired Automation

- > Data Lineage (65%)
- > Impact Analysis (48%)
- > Data Cataloging (61%)
- > Data Harvesting (38%)
- > Data Mapping (53%)
- > Code Generation (21%)



Key Automation Points for Data Intelligence



Auto-Document

Data Sources

Data Models

Data Movement Processes

Data Consumption Points



Auto-Configure & Classify

Technical Asset Associations

Business Asset Associations

Business-Technical Associations

Sensitivity Classifications



Auto-Render & Navigate

End-to-End Lineage

Impact Analysis

Visual Mind Maps

Dashboards



Auto-Generate

Data Pipelines

Data Workloads

Data Movement Code

Platform Orchestration

Reduce: Time, Costs, Latency, Risk
Increase: Agility, Accuracy, Portability, Scale-Ability

erwin Automation Case Study: Global Pharma Leader

Creating Data Vault hubs and satellites for its massive data warehouse was laborious. The company wanted to increase development speed, aggregate data from different systems for enterprise collaboration, and trace data lineage to safeguard personal health information associated with clinical trials.



- erwin automated the creation of Data Vault structures and ETL operations.
- **200+ tables, jobs and processes** were generated with 10-12 scripts, dramatically accelerating Data Vault projects and optimizing data warehouse management.
- Reduced manual development costs by **70%**.
- **95%** of production code is generated with “zero touch,” improving time to value by reducing errors and costly re-work associated with manual processes.
- Data integrity is assured, the warehouse is well-documented, and traceability from the marts back to the operational data speeds the investigation of issues and impact analysis.

End Result: Created a sustainable approach to Data Vault deployment and data governance, ensuring the agile, adaptable and timely delivery of actionable insights to the business in line with regulatory requirements with full transparency and ease of auditability.

Recommendations



Constantly re-evaluate and tune your DG strategy and deployment.



Put data quality first, and it starts with metadata quality.



Data lineage is complex and an absolute requirement; deal with it.



Automated code generation is a huge opportunity for efficiency, agility and consistency in data preparation.

Recommendations, continued



Impact analysis is more than “where used;” it drives data valuation efforts.



Catalog your data assets: you can’t govern what you can’t catalog.



Promote data literacy: “An educated consumer is your best customer.”



Automation is always a good option, but with some tasks, it is the only option.

Request a Trial of erwin Data Intelligence



Try for Free

Buy Now

+1 800-78-erwin

Solutions

Products

Services

Support

Resources

Partners

About

How do you know what's true? Look at your data.

Whether deciding to stay home or re-engineer your business model, data paves the way for smart decisions.

Join us for three virtual opportunities to learn about the latest versions of our **enterprise modeling** and **data governance/intelligence** solutions:

