

10 Signs That You Should Invest in a Cloud Management Platform

The 10 Signs

- 01 Deploying new workloads takes days or weeks.
- 02 Workloads live forever and create sprawl.
- 03 Your IT team performs the same tasks over and over again.
- 04 Lack of standardization is leading to inconsistent configurations.
- 05 You can't get control of public cloud shadow IT.
- 06 Your consumers tell you that public cloud IaaS is cheaper than on-premises IaaS.
- 07 You just don't know how to control the sprawl.
- 08 You know that hybrid cloud is the future.
- 09 Forecasting resource consumption is difficult, if not impossible.
- 10 Your CIO or IT leadership has mandated a move to ITaaS.

When confronted with cloud management challenges, many organizations operate on a reactive basis—developing ad hoc solutions to specific problems as they arise. And because of this, many IT cloud management programs are rife with duplicate capabilities, non-standard approaches, process inefficiencies, and the creation of a shadow IT organization. Companies are becoming exposed to unnecessary risks and costs and missing out on opportunities to add business value.

Cloud management is a process just as critical as more traditional business operations. But few organizations have the time or expertise to build a cloud management program that meets today's needs—and will be ready for whatever the future holds.

That's where working with a knowledgeable partner and using a Cloud Management Platform (CMP) can make all the difference. CMPs can help you quickly reach a new level of self-service IT capability without a major up-front investment of skills or vendor lock-in.

Here are the top ten signs that show you're ready to start investing in a Cloud Management Platform to get your IT strategy and program back on track.

“

“CMPs can help you quickly reach a new level of self-service IT capability without a major upfront investment of skills or vendor lock-in.”



01 Deploying a new workload takes days or weeks from when it was first requested

The goal for deploying new workloads should be minutes or at most hours. We live a world where business agility is a key competitive differentiator, and IT must enable the business to compete.

02 Once a workload is provisioned, it lives forever and creates sprawl

With the outdated "ownership" model, the same workload is used, re-used and repurposed for months or years—just like "server huggers" before the advent of virtualization. The "rental" model provides just-in-time provisioning based on standardized workloads.

03 Your IT team performs the same tasks over and over again

"Provision me a Web server", "reboot this machine for me", "add a disk to this workload"—these are all tasks that can easily be automated with a CMP, freeing up your IT staff for solving hard problems and architecting for the future. In most IT shops, the number of workloads under management is ever-increasing, but the number of staff isn't. Automating repetitive tasks is the only way for IT to have time for the hard stuff.

04 A lack of standardization causes inconsistent configurations and support issues

Without standardized builds, IT must troubleshoot problems caused by configuration drift. Standardized service catalog offerings and automated provisioning can ensure consistency.

05 You can't get control of public cloud shadow IT

First, you need a single pane of glass to manage both your private and public infrastructure. Then you need to determine the root cause of shadow IT. Often, it's because there's no private cloud available that can deliver IaaS as fast as AWS or Azure, which leads us right back to the first item in our list—it takes too long to deploy a new workload.

06 Your IT service consumers tell you that public cloud IaaS is cheaper than on-premises IaaS

Are you showing your consumers the cost of on-premises private cloud? Many organizations are not ready for chargeback, but showback can help dispel the myth that public cloud is always cheaper. In some cases, public cloud will be cheaper, and other cases it will be your private cloud. At minimum you need to present the data in order to have the conversation.



The goal for deploying new workloads should be minutes or at most hours.

07 You know you have sprawl, you just don't know how to control it

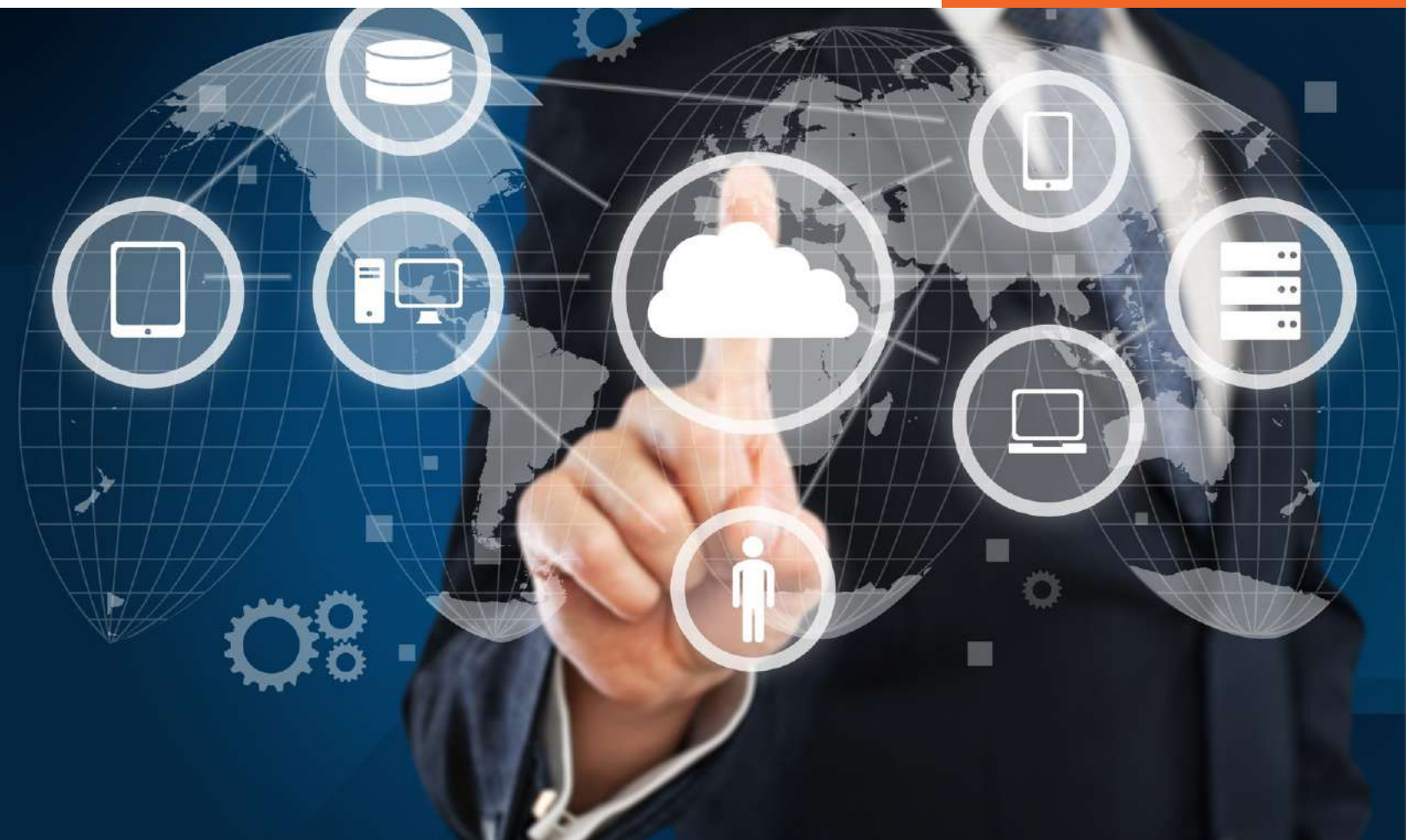
Moving to the rental model, with just-in-time provisioning of standard workloads, will help reduce sprawl. Cost visibility also helps by preventing over-provisioning. Even without chargeback, your end users' behavior will change when they see that 8 CPUs cost more than 2. A CMP with integrated workload rightsizing recommendations helps even more, providing information to your IT consumers while at the same time letting them make the ultimate resource decisions for their applicable workloads.

08 You know that hybrid cloud is the future

Most organizations have significant investments in their own infrastructure. At the same time, companies are using public clouds like AWS and Azure to develop next-gen apps and to avoid purchasing more on-premises data center hardware. A CMP provides a single pane of glass and automated ITaaS across all of these environments.



A CMP provides a single pane of glass and automated ITaaS across all of these environments

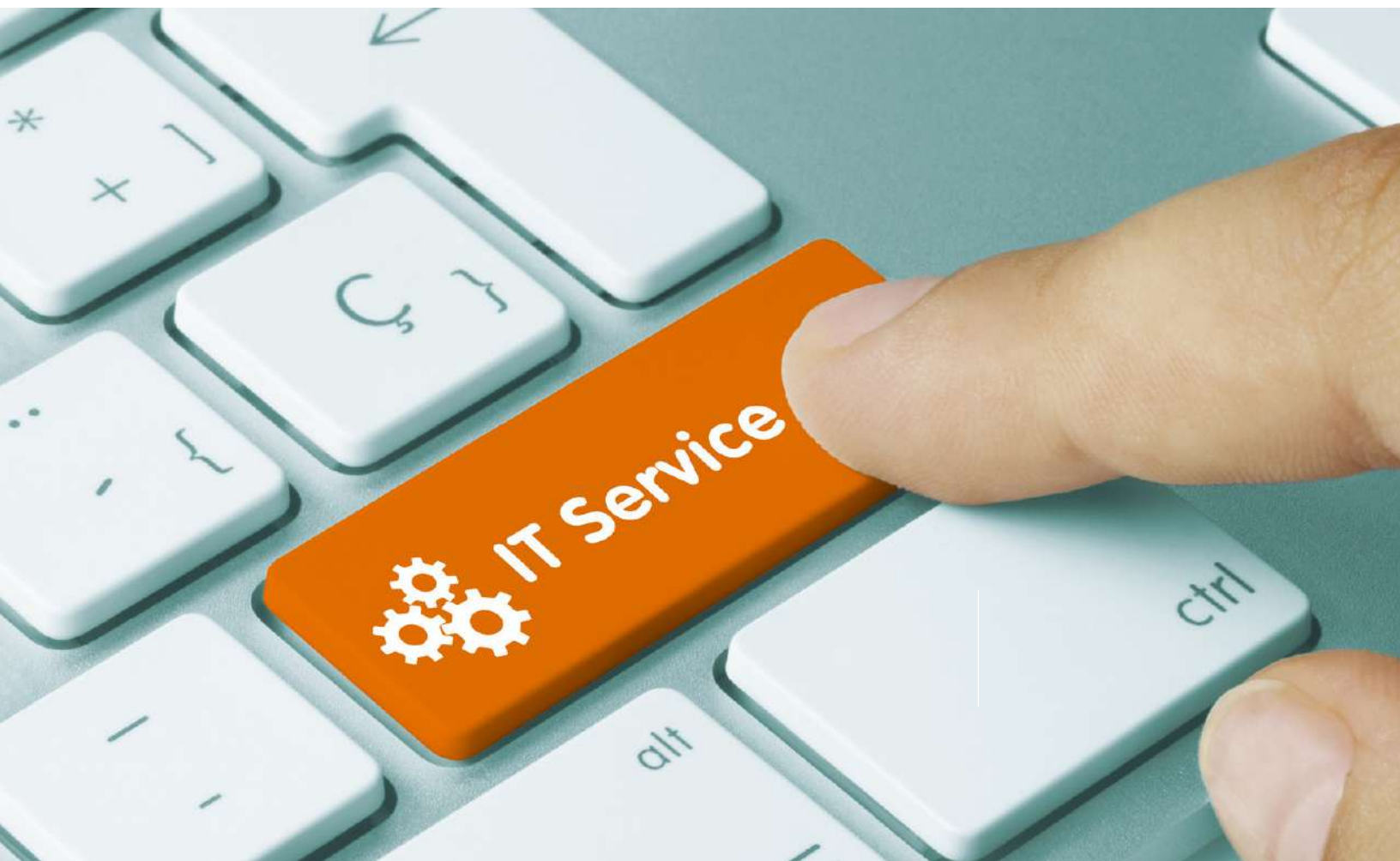


09 Forecasting resource consumption is difficult, if not impossible, and IT ends up acting as referee for dev team hardware consumption

Workloads that live forever and resources that are over-provisioned make it extremely difficult to budget and plan purchases. It's easier for dev teams to clamor for more than to optimize what they currently use. An efficient CMP implementation provides predictability while optimizing the use of all current and future resources. Agreed-upon "virtual data center" resource sandboxes for your dev teams prompt them to police their own consumption, freeing up IT to do more important things and significantly mitigating sprawl.

10 Your CIO or IT leadership has mandated a move to ITaaS

Moving to a self-service model means organizational transformation. Priorities and processes must change. There needs to be a leader who has the vision and sees the inherent business value, and who is willing to push the IT organization to undertake these changes so that IT becomes an enabler to the business.



About Embotics

Embotics is the cloud automation company for IT organizations and service providers that need to improve provisioning or enable self-service capabilities. With a relentless focus on delivering a premier user experience and unmatched customer support, Embotics is the fastest and easiest way to automate provisioning across private/public/hybrid cloud infrastructures. Its flagship product, Embotics Commander, is used by organizations including Nordstrom, NASA HBO, Informatica and NTT Data.

For more information:

www.embotics.com

info@embotics.com

+1 877 599 0494